

# Iron Horse

at HERITAGE GROVE

## Residence 1

2,000 Square Feet • 2 - 3 Bedrooms • 2.5 Baths  
2-Car Garage • Covered Backyard Patio



### PRELIMINARY

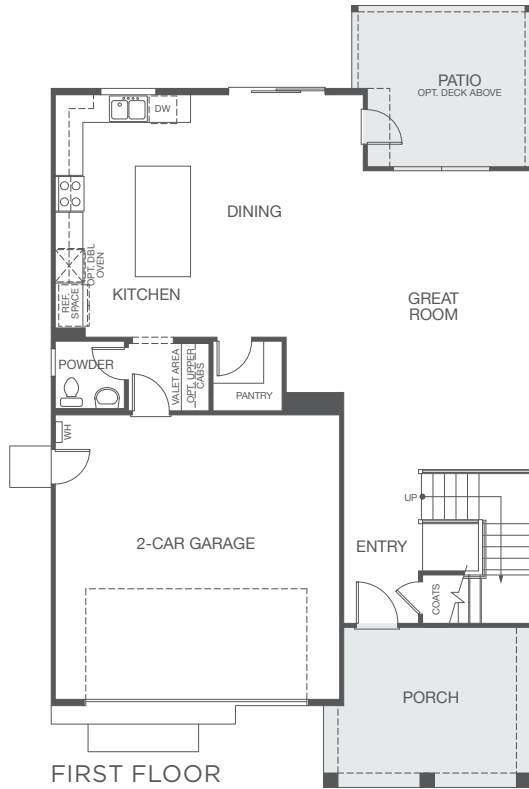
Prices, plans, maps, materials, features and specifications are subject to change without notice. All square footages are approximate. All illustrations are artist's concepts only, are not to scale and are subject to change in actual production. Because each floor plan may have several exterior design treatments, front entry doors and ceiling heights may vary and certain windows, alcoves, ledges, seats, interior doors, etc. may be added or deleted or may vary in size, style and/or location, depending upon the exterior elevation. Comstock Homes Broker, Inc. CA DRE license no. 01912034.

# Iron Horse

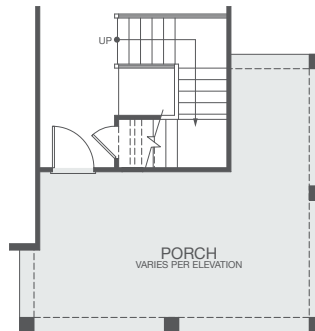
at HERITAGE GROVE

## Residence 2

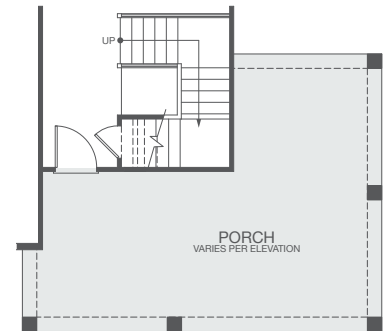
2,327 Square Feet • 3 - 4 Bedrooms • 2.5 Baths • 2-Car Garage  
Covered Backyard Patio



FIRST FLOOR



Alt. Porch 1



Alt. Porch 2



2A - CRAFTSMAN



2D - EUROPEAN



2F - FARMHOUSE

### PRELIMINARY

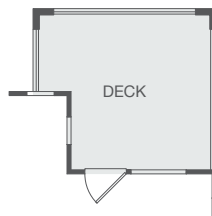
Prices, plans, maps, materials, features and specifications are subject to change without notice. All square footages are approximate. All illustrations are artist's concepts only, are not to scale and are subject to change in actual production. Because each floor plan may have several exterior design treatments, front entry doors and ceiling heights may vary and certain windows, alcoves, ledges, seats, interior doors, etc. may be added or deleted or may vary in size, style and/or location, depending upon the exterior elevation. Comstock Homes Broker, Inc. CA DRE license no. 01912034.

# Iron Horse

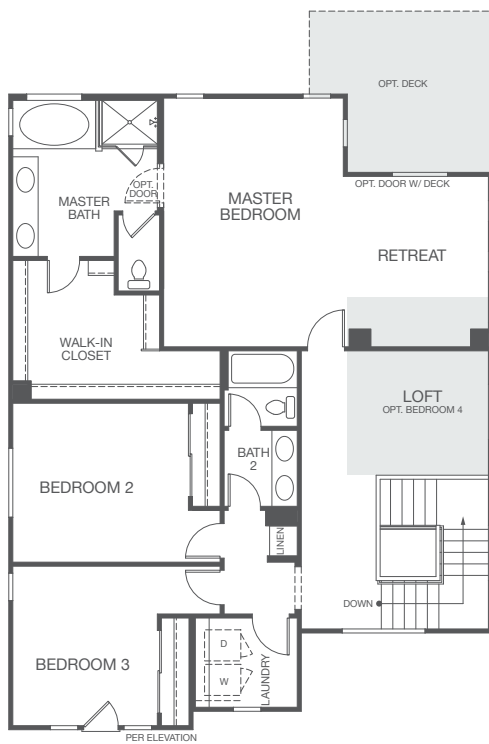
at HERITAGE GROVE

## Residence 2

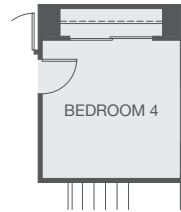
2,327 Square Feet • 3 - 4 Bedrooms • 2.5 Baths • 2-Car Garage  
Covered Backyard Patio



Opt. Rear Deck




SECOND FLOOR



Opt. Bedroom 4

### PRELIMINARY

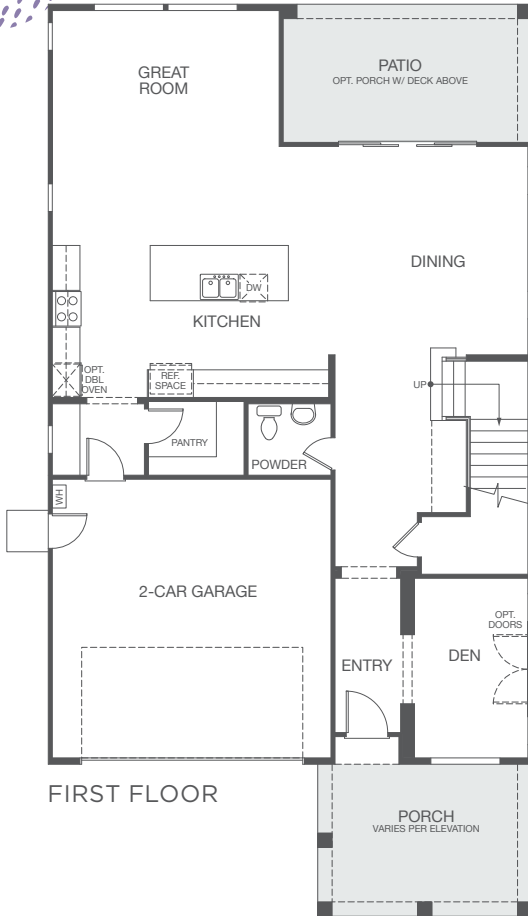
Prices, plans, maps, materials, features and specifications are subject to change without notice. All square footages are approximate. All illustrations are artist's concepts only, are not to scale and are subject to change in actual production. Because each floor plan may have several exterior design treatments, front entry doors and ceiling heights may vary and certain windows, alcoves, ledges, seats, interior doors, etc. may be added or deleted or may vary in size, style and/or location, depending upon the exterior elevation. Comstock Homes Broker, Inc. CA DRE license no. 01912034. 

# Iron Horse

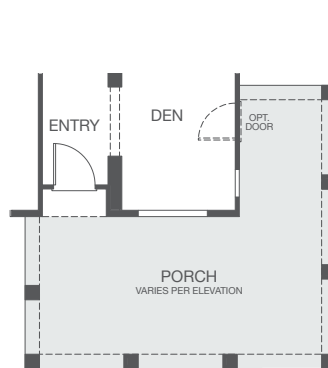
at HERITAGE GROVE

## Residence 3

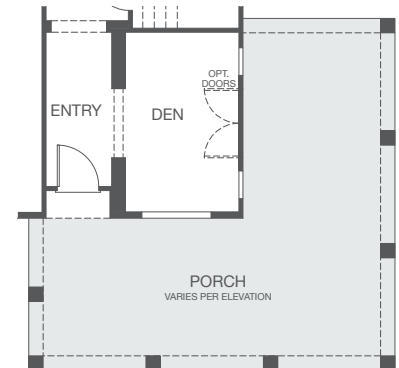
2,478 Square Feet • 3 Bedrooms • 2.5 Baths • 2-Car Garage  
Covered Backyard Patio



Opt. Porch at Rear Deck



Alt. Porch 1



Alt. Porch 2



3B - TRADITIONAL



3C - SANTA BARBARA



3C ALT - SANTA BARBARA



3F - FARMHOUSE

### PRELIMINARY

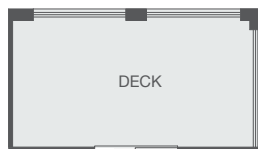
Prices, plans, maps, materials, features and specifications are subject to change without notice. All square footages are approximate. All illustrations are artist's concepts only, are not to scale and are subject to change in actual production. Because each floor plan may have several exterior design treatments, front entry doors and ceiling heights may vary and certain windows, alcoves, ledges, seats, interior doors, etc. may be added or deleted or may vary in size, style and/or location, depending upon the exterior elevation. Comstock Homes Broker, Inc. CA DRE license no. 01912034.

# Iron Horse

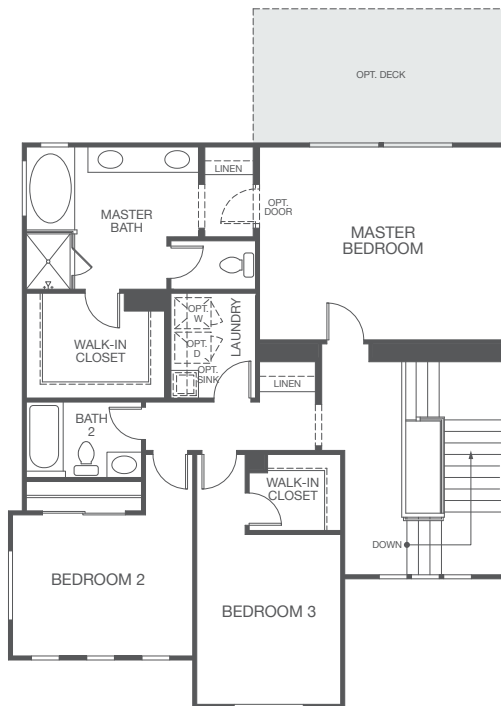
at HERITAGE GROVE

## Residence 3

2,478 Square Feet • 3 Bedrooms • 2.5 Baths • 2-Car Garage  
Covered Backyard Patio




Opt. Rear Deck



SECOND FLOOR

### PRELIMINARY

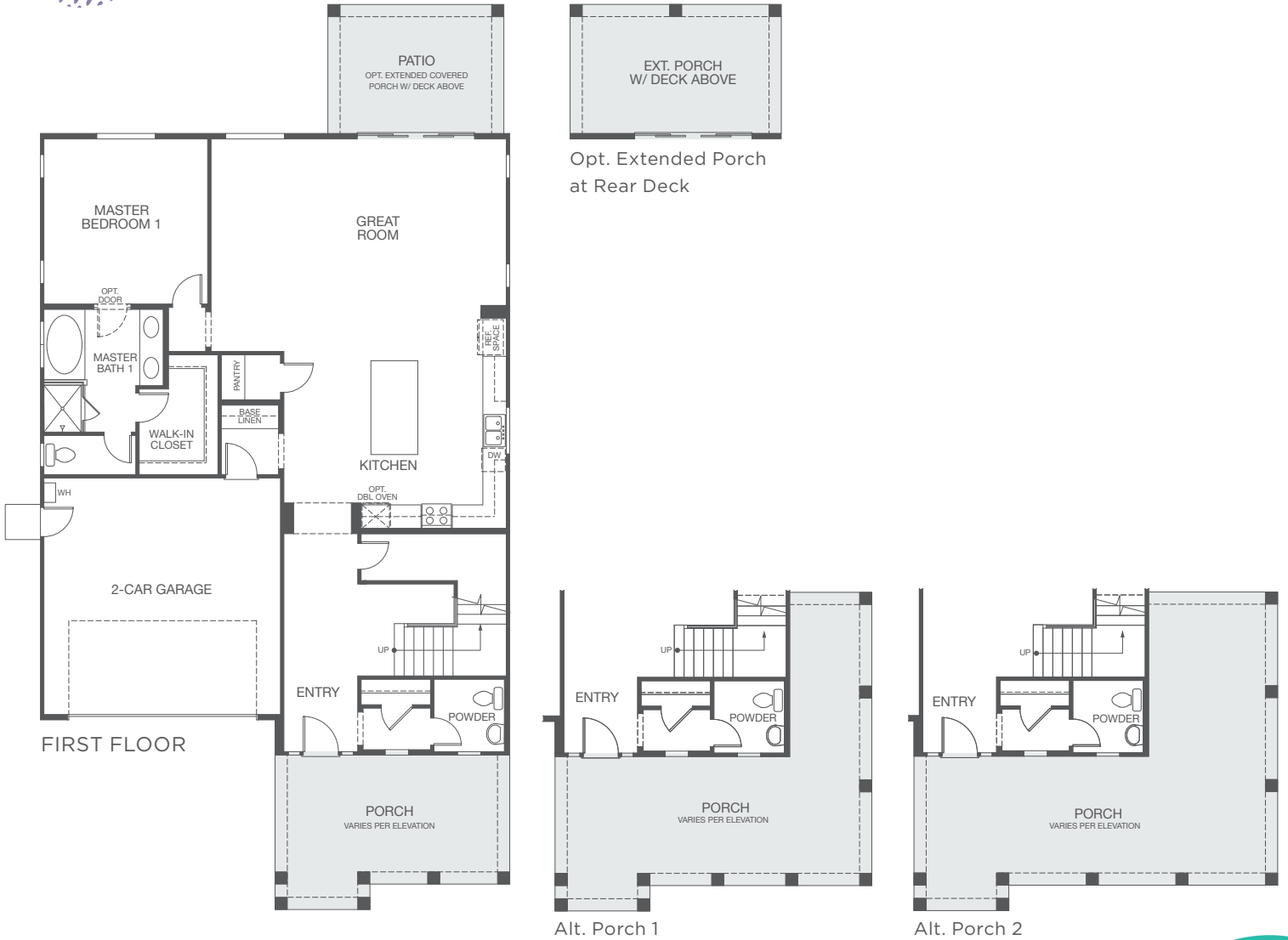
Prices, plans, maps, materials, features and specifications are subject to change without notice. All square footages are approximate. All illustrations are artist's concepts only, are not to scale and are subject to change in actual production. Because each floor plan may have several exterior design treatments, front entry doors and ceiling heights may vary and certain windows, alcoves, ledges, seats, interior doors, etc. may be added or deleted or may vary in size, style and/or location, depending upon the exterior elevation. Comstock Homes Broker, Inc. CA DRE license no. 01912034. 

# Iron Horse

at HERITAGE GROVE

## Residence 4

2,947 Square Feet • 4 Bedrooms (Including Downstairs Suite)  
3.5 Baths • 2-Car Garage • Covered Backyard Patio



### PRELIMINARY

Prices, plans, maps, materials, features and specifications are subject to change without notice. All square footages are approximate. All illustrations are artist's concepts only, are not to scale and are subject to change in actual production. Because each floor plan may have several exterior design treatments, front entry doors and ceiling heights may vary and certain windows, alcoves, ledges, seats, interior doors, etc. may be added or deleted or may vary in size, style and/or location, depending upon the exterior elevation. Comstock Homes Broker, Inc. CA DRE license no. 01912034.

# Iron Horse

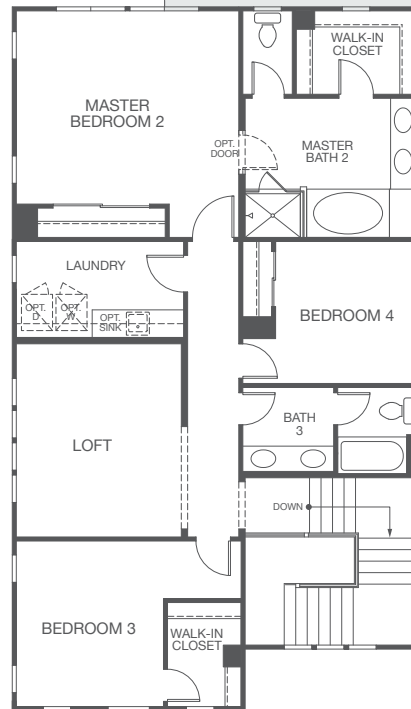
at HERITAGE GROVE

## Residence 4

2,947 Square Feet • 4 Bedrooms (Including Downstairs Suite)  
3.5 Baths • 2-Car Garage • Covered Backyard Patio



Opt. Rear Deck



SECOND FLOOR

### PRELIMINARY

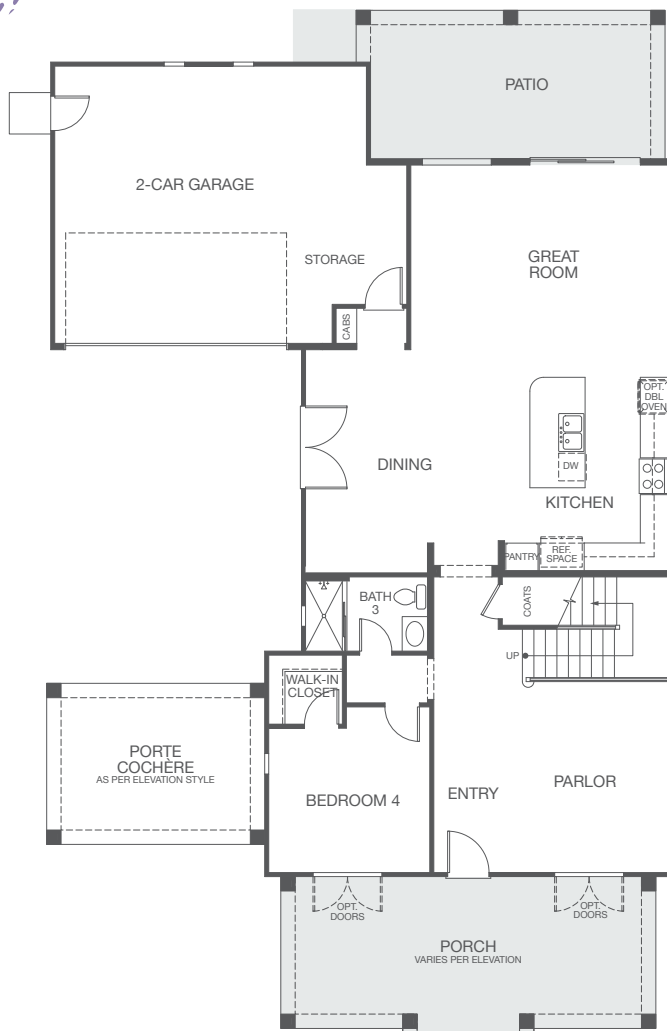
Prices, plans, maps, materials, features and specifications are subject to change without notice. All square footages are approximate. All illustrations are artist's concepts only, are not to scale and are subject to change in actual production. Because each floor plan may have several exterior design treatments, front entry doors and ceiling heights may vary and certain windows, alcoves, ledges, seats, interior doors, etc. may be added or deleted or may vary in size, style and/or location, depending upon the exterior elevation. Comstock Homes Broker, Inc. CA DRE license no. 01912034.

# Iron Horse

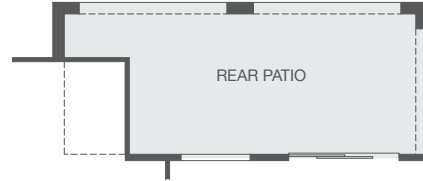
at HERITAGE GROVE

## Residence 5

2,703 - 2,927 Square Feet • 4 - 5 Bedrooms • 3 Baths • 2-Car Garage  
Covered Backyard Patio



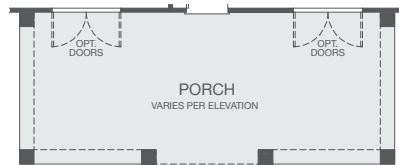
FIRST FLOOR



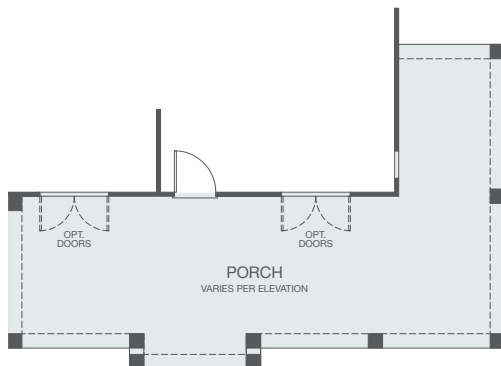
Opt. Rear Patio with  
Master Retreat Deck Option



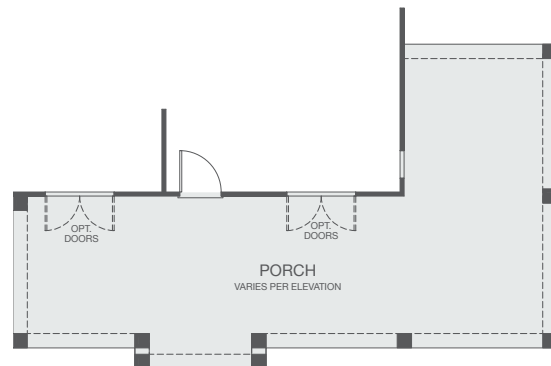
Opt. Rear Patio with Deck Option



Opt. Front Porch with  
Front Deck Option



Alt. Porch 1



Alt. Porch 2

### PRELIMINARY

Prices, plans, maps, materials, features and specifications are subject to change without notice. All square footages are approximate. All illustrations are artist's concepts only, are not to scale and are subject to change in actual production. Because each floor plan may have several exterior design treatments, front entry doors and ceiling heights may vary and certain windows, alcoves, ledges, seats, interior doors, etc. may be added or deleted or may vary in size, style and/or location, depending upon the exterior elevation. Comstock Homes Broker, Inc. CA DRE license no. 01912034.

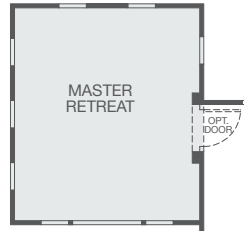


# Iron Horse

at HERITAGE GROVE

## Residence 5

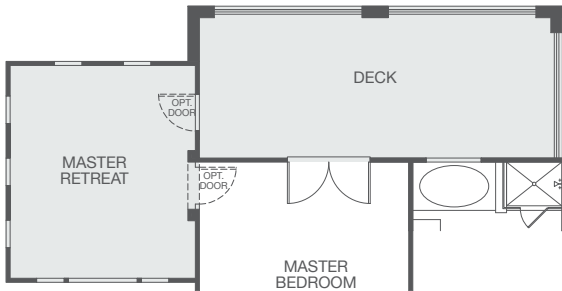
2,703 - 2,927 Square Feet • 4 - 5 Bedrooms • 3 Baths • 2-Car Garage  
Covered Backyard Patio



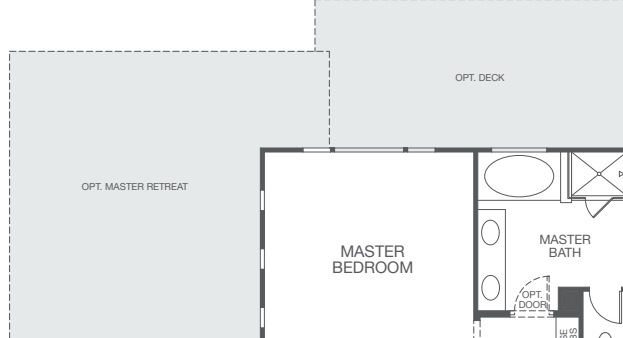
Opt. Master Retreat



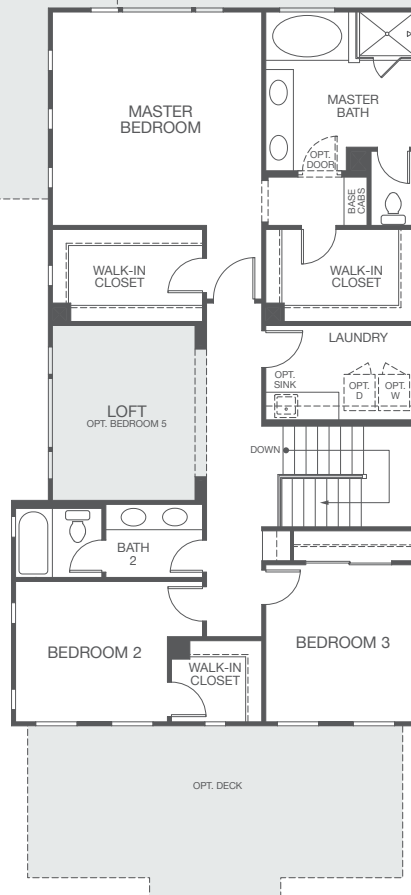
Opt. Rear Deck



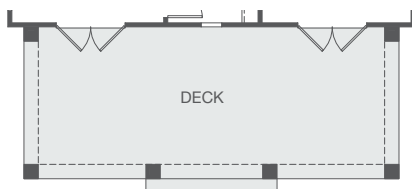
Opt. Rear Deck with Master Retreat



Opt. Bedroom 5



SECOND FLOOR



Opt. Front Deck



5A - CRAFTSMAN



5F - FARMHOUSE



5G - MONTEREY

### PRELIMINARY

Prices, plans, maps, materials, features and specifications are subject to change without notice. All square footages are approximate. All illustrations are artist's concepts only, are not to scale and are subject to change in actual production. Because each floor plan may have several exterior design treatments, front entry doors and ceiling heights may vary and certain windows, alcoves, ledges, seats, interior doors, etc. may be added or deleted or may vary in size, style and/or location, depending upon the exterior elevation. Comstock Homes Broker, Inc. CA DRE license no. 01912034.

# Iron Horse

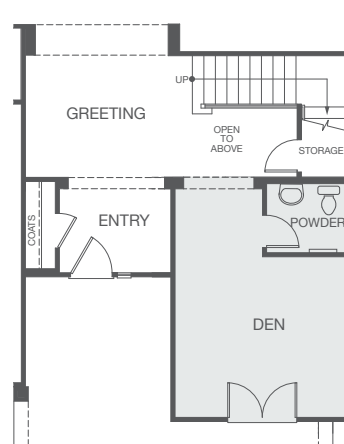
at HERITAGE GROVE

## Residence 6

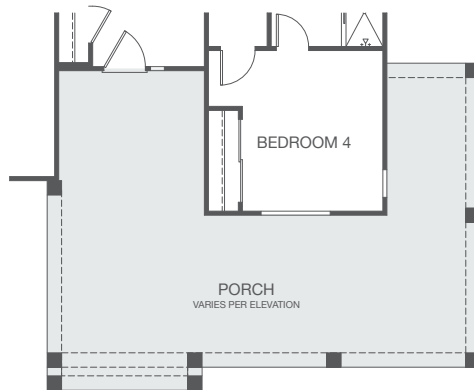
3,177 Square Feet • 3 - 5 Bedrooms • 3.5 - 4.5 Baths  
3-Car Tandem Garage • Covered Backyard Patio



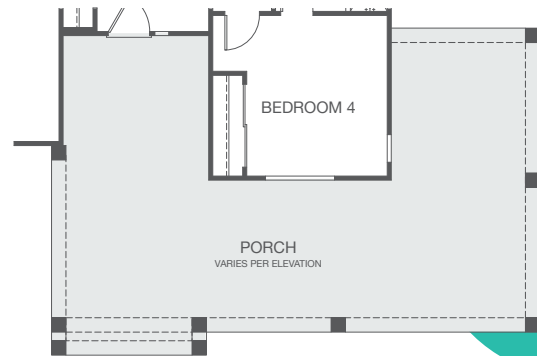
Opt. Patio



Opt. Den



Alt. Porch 1



Alt. Porch 2

### PRELIMINARY

Prices, plans, maps, materials, features and specifications are subject to change without notice. All square footages are approximate. All illustrations are artist's concepts only, are not to scale and are subject to change in actual production. Because each floor plan may have several exterior design treatments, front entry doors and ceiling heights may vary and certain windows, alcoves, ledges, seats, interior doors, etc. may be added or deleted or may vary in size, style and/or location, depending upon the exterior elevation. Comstock Homes Broker, Inc. CA DRE license no. 01912034.

# Iron Horse

at HERITAGE GROVE

## Residence 6

3,177 Square Feet • 3 - 5 Bedrooms • 3.5 - 4.5 Baths  
3-Car Tandem Garage • Covered Backyard Patio



### PRELIMINARY

Prices, plans, maps, materials, features and specifications are subject to change without notice. All square footages are approximate. All illustrations are artist's concepts only, are not to scale and are subject to change in actual production. Because each floor plan may have several exterior design treatments, front entry doors and ceiling heights may vary and certain windows, alcoves, ledges, seats, interior doors, etc. may be added or deleted or may vary in size, style and/or location, depending upon the exterior elevation. Comstock Homes Broker, Inc. CA DRE license no. 01912034.